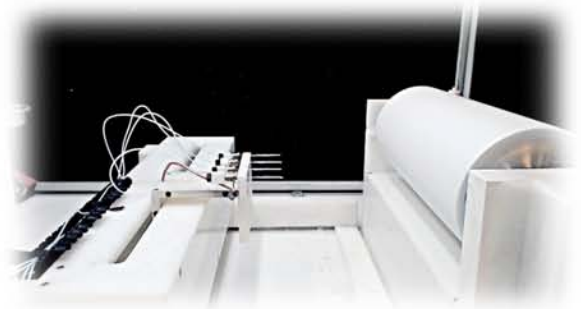
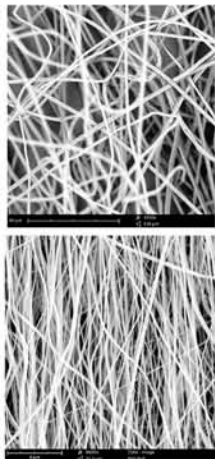


**LAB- ELECTROSPINNING UNIT**

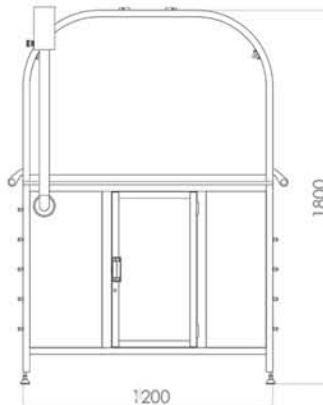


**DESCRIPTION**

Lab Electrospinning Unit is a useful and versatile machine equipped with a linear sliding spinneret and a rotating collector. The machine is provided with a syringe pump feeding system and a High Voltage power supply up to 35 kV. The machine control is a PLC system integrated which allows all the process operations thanks by a full touch screen panel. The inside of machine and components are made of chemical resistant plastic to minimize the interaction with electrical field and solvents instead the frame is made of anodized aluminium and polycarbonate panels.



Example of random and aligned fibers collected by Lab-Unit system



## TECHNICAL DATA

### GENERAL

High speed rotating collector  
Multijet linear sliding unit  
HV Generator: 35 kV  
Syringe Pump (customizable)  
High-tech control panel, full touch-screen

### THECA

Anodized aluminum case: 1200x1200x1800 mm  
Profiles connection to ground to get Faraday cage  
Transparent walls made of unbreakable shatter-proof of polycarbonate.  
Two doors for machine set-up

### ACCESSORIES

Syringe of different size  
Tip cap for syringe  
Fittings tube  
Needles

### SAFETY

CE compliant (3<sup>rd</sup> party verified)  
Shut-off switches in access doors

### POLYMERS

The system is suitable to process both water and non-water soluble polymers

### ACCESSORIES ON DEMAND

Exhaust ventilation system  
Different diameters and materials for drum collectors

## CONTACT INFO

### SPINBOW S.R.L.

Via dell'Artigiano 8/6  
40016 San Giorgio di Piano (BO)  
Italy

mail: [info@spinbow.it](mailto:info@spinbow.it)  
phone: (+39) 3483002352  
VAT: IT03235461203

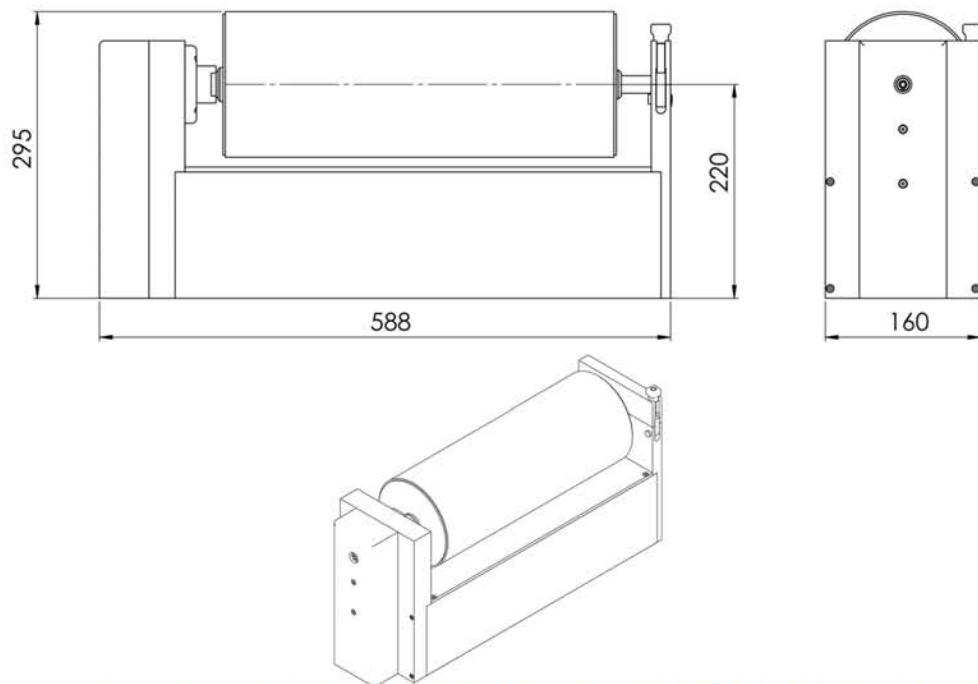
For technical questions contact  
our engineering office:

[tech@spinbow.it](mailto:tech@spinbow.it)



**DRUM COLLECTOR TECHNICAL DATA**

Drive Motor	Brushless Motor
Drive Control	PLC
Max Rotating Speed	4300 rpm (depending by drum dimensions)
Case material	POM
Diameter Collector Dimensions	Collector 1: $\phi$ 150 mm Collector 2: $\phi$ 70 mm Customizable (min $\phi$ 40 mm - max $\phi$ 150 mm)
Length Collector Drum	405 mm
Collector Material	Aluminium (customizable)
Collector Grounded	Yes
Regulatory Certification	CE compliant (3 <sup>rd</sup> party verified)



**CONTACT INFO**

**SPINBOW S.R.L.**

Via dell'Artigiano 8/6  
40016 San Giorgio di Piano (BO)  
Italy

mail: [info@spinbow.it](mailto:info@spinbow.it)  
phone: (+39) 3483002352  
VAT: IT03235461203

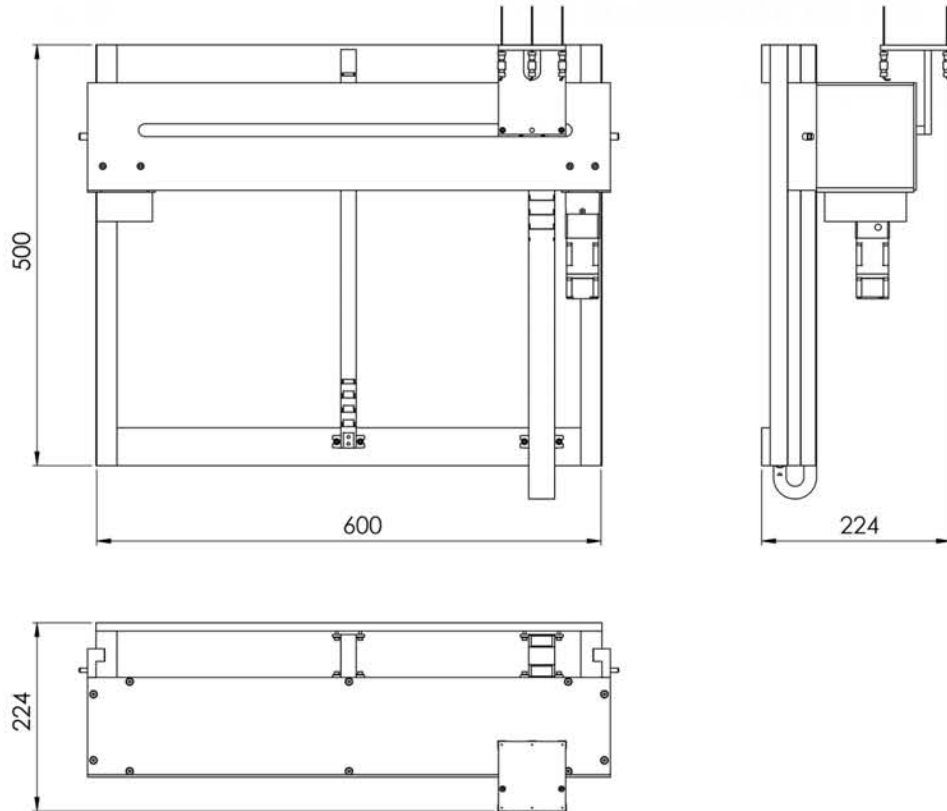
For technical questions contact  
our engineering office:

[tech@spinbow.it](mailto:tech@spinbow.it)

**LAB- ELECTROSPINNING UNIT**

**SLIDING UNIT TECHNICAL DATA**

Drive Motor	Brushless Motor
Drive Control	PLC
Max Traslating Speed	2 m/min
Max Stroke	420 mm
Case material	POM
Number needle	Max 6



**CONTACT INFO**

**SPINBOW S.R.L.**

Via dell'Artigiano 8/6  
40016 San Giorgio di Piano (BO)  
Italy

mail: [info@spinbow.it](mailto:info@spinbow.it)  
phone: (+39) 3483002352  
VAT: IT03235461203

For technical questions contact  
our engineering office:

[tech@spinbow.it](mailto:tech@spinbow.it)