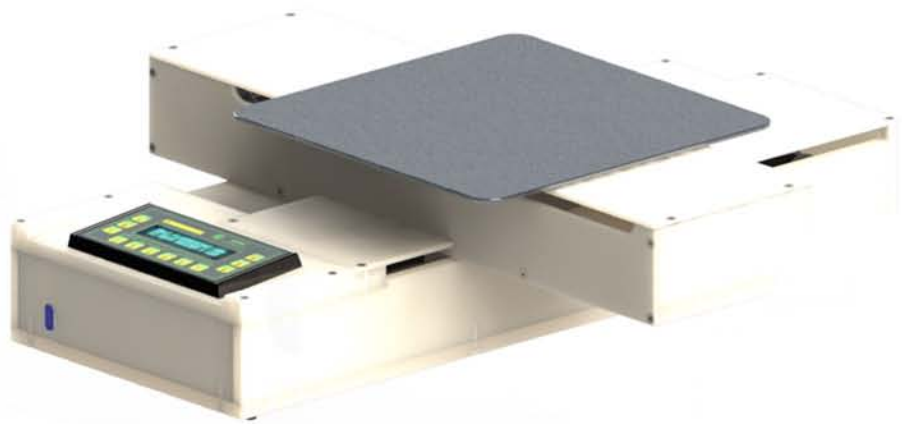


XY MOVING COLLECTOR

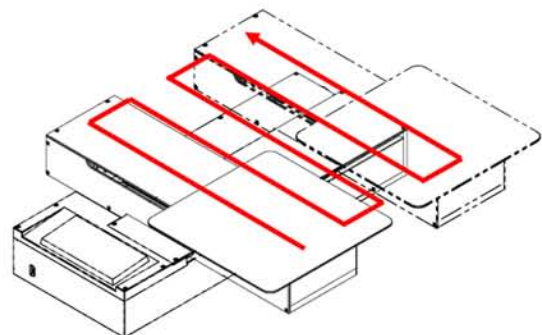
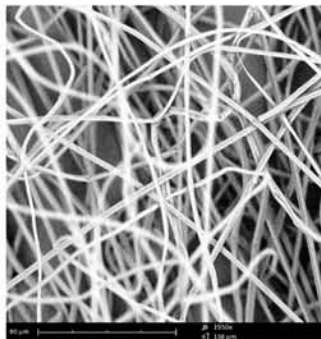


DESCRIPTION

The XY Moving System is equipped with a square plate have a fixed length of 250 mm and it can be easily remove by hand. Both traslating axes speed can be chosen by users up to a maximum of 2m/min, as soon as the stroke and the typology of trajectory available until 5 different ones (e.g.:one axis moving or both simultaneously, like bustrophedic trajectory).

The system has a useful display on board to set the machine-parameters or it can be controlled by the touch display of the machine.

The structure is made of chemical resistant plastic to minimize the inter- actions with electrical field and to improve the collection on the plate.

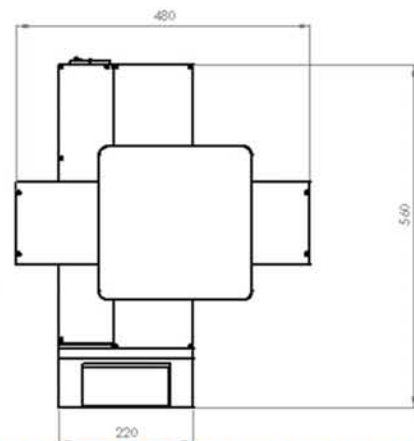
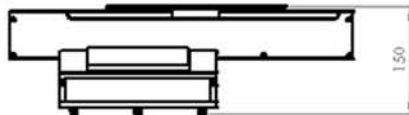


Example of brustrophedic trajectory

XY MOVING COLLECTOR

TECHNICAL DATA

Drive Motor	1,8° Stepper Motor
Dimensions	560x480x150 mm (22x19x6 in)
Case Material	POM
Weight	8 kg
Max Speed	2 m/min
Min Speed	0,2 m/min
Max Stroke	250 mm
Collector Dimensions	250x250 mm (customizable)
Collector Material	Aluminium (customizable)
Collector Grounded	Yes
Display	LCD 20 characters for 2 lines 12 keys
Interface	RS232 Remote Control with pc-software
Trajectory	Single Axis X Single Axis Y Coordinates Axes XY (warp on X and weft on Y) Coordinates Axes XY (warp on Y and weft on X) Coordinates Axes XY (alternating warp and weft on both axes)
Regulatory Certification	CE compliant (3 rd party verified)



CONTACT INFO

SPINBOW S.R.L.

Via dell'Artigiano 8/6
40016 San Giorgio di Piano (BO)
Italy

mail: info@spinbow.it
phone: (+39) 3483002352
VAT: IT03235461203

For technical questions contact
our engineering office:

tech@spinbow.it